

# Cores and Keys

dormakaba 



## More keyways. More standard finishes **More peace of mind.**

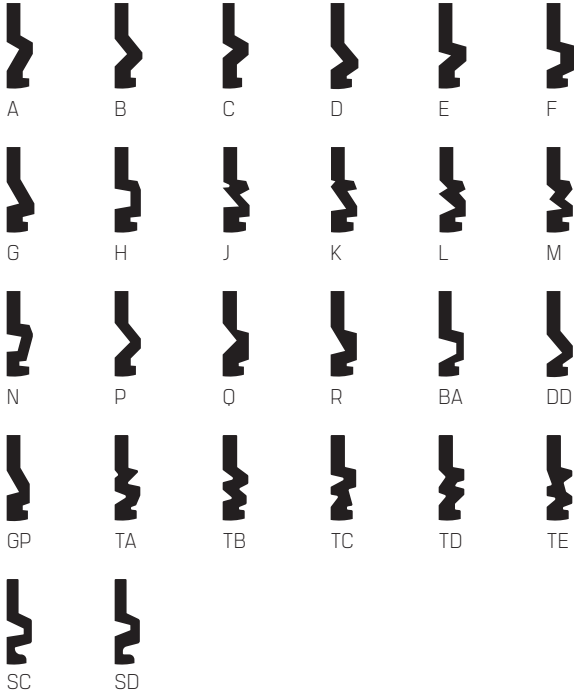
With a heritage of expertise, quality, and security, consumers and industry professionals trust dormakaba. Our cores and keys use high-quality materials and renowned craftsmanship to deliver the best possible value. dormakaba Cores and Keys are easy to order, simple to install, and offer the performance and reliability you expect. With 26 keyways - more than we've ever offered before - dormakaba Cores and Keys provide greater security and more peace of mind..



## More keyways.

With **26 keyways** available for new construction or retrofit, plus the craftsmanship you expect, our keyways offer greater security for you and your facility.

- Complete line of 26 keyways
- All brass keys
- Keys stamped "duplication prohibited"



## More standard finishes.

Cores come in **three standard finishes** to match your lock and hardware aesthetics so you don't have to compromise design when you choose the best value.

- Satin chrome – standard finish 626
- Oil-rubbed bronze – standard finish 613
- Satin brass – standard finish 606



## More peace of mind.

Our new core and key offerings meet the high standards of quality, durability, and craftsmanship you expect.

- Brass body uncombined cores available in six- and seven-pin configurations—giving you the flexibility to combine for customer specifications
- Brass face, plated with one of three standard finishes
- Buy American Act and Trade Agreements Act compliant
- Three-year limited warranty



**For more options, greater quality, and higher value, choose dormakaba Cores and Keys.**



## Specifications

### General

Core Format	SFIC
-------------	------

### Physical

Core Body Material	Brass
Core Face Material	Brass
Core Face Stamp	Blank
Core Size (pin count)	6 or 7
Core Combination	Uncombined Only
Key Material	Brass
Key Stamp	Duplication Prohibited (Front Only)
Keyway Count	26
Finishes	606, 613, 626

### Features

Warranty	3-Year Limited
----------	----------------

# More keyways, more standard finishes, and a history of quality and craftsmanship.



Backed by the heritage and expertise of one of America's most trusted security products providers, choose dormakaba Cores and Keys for reliability, performance, and value.

Keyways	dormakaba	Falcon	Arrow	KSP	GMS	MBS	Oak
A	■	■	■	■	■	■	■
B	■	■	■	■	■	■	
C	■	■	■	■	■	■	
D	■	■	■	■	■	■	■
E	■	■	■	■	■	■	■
F	■	■	■	■	■	■	■
G	■	■	■	■	■	■	■
H	■	■	■	■	■	■	■
J	■	■	■	■	■	■	■
K	■	■	■	■	■	■	■
L	■	■	■	■	■	■	■
M	■	■	■	■	■	■	■
N	■	■					■
P	■						
Q	■	■	■	■	■	■	■
R	■	■	■		■	■	■
BA	■						
DD	■	■			■		■
GP	■						
SC*	■		■	■	■		
SD*	■		■	■	■		
TA	■		■				
TB	■	■	■		■	■	■
TC	■		■		■	■	
TD	■	■	■		■	■	■
TE	■		■		■	■	

\*SC and SD keyways are equivalent to Arrow IC and ID keyways, respectively

ST-0218 07/21

dormakaba USA Inc.  
6161 E. 75th St.  
Indianapolis, IN 46250  
800.523.8483

dormakaba Canada Inc.  
7301 Decarie Blvd  
Montreal, Quebec H4P 2G7  
877 468-3555

[www.dormakaba.us](http://www.dormakaba.us)